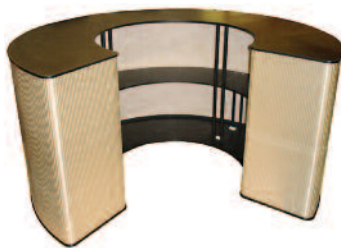
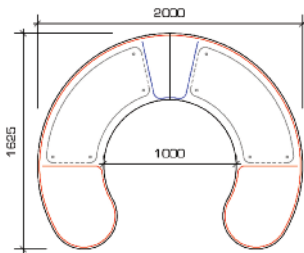
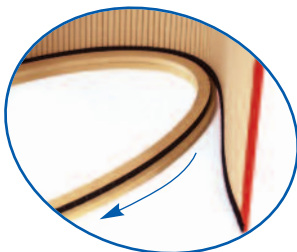
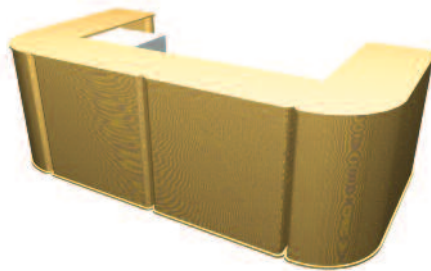
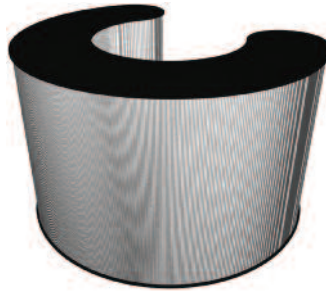


Portable Furniture

*Physique is the flat-pack furniture of the display and exhibition industry. Constructed from composite materials and flexible MDF or PVC tambour, Physique can be transformed into virtually any shape or function required. Physique's strength and durability means that it can be re-used many times. All physique units are easy to assemble without the need for tools. **Tops and bases are available in Birch, Silver or Black thermoformed finishes.** (NB Bags not included with any of the portable furniture).*



Physique units can also be custom designed to your specification.



Physique is constructed from MDF tambour, which is strong, versatile and available in beech, brushed aluminium laminate or a choice of fabric finishes.

Physique can be **custom** designed to fit your specific requirements. We simply need an idea or sketch to allow us to **design** it for you.



Physique Contour (see page 24) is a brand new range of 4 exciting designs that are strong, durable, high specification counter units specially created to complement the latest stand designs.

Contour is constructed from heavy duty PVC tambour, available in silver or white and can be customised by overprinting directly onto the white tambour.



Physique Graphic incorporates a unique **Twist & Lock** pole system, constructed from composite materials and 25mm aluminium tube poles, creating an internal structure that strengthens the unit without the need for an MDF tambour wrap. This makes it lighter and more portable than traditional tambour wraps, at approx. 70% the weight.

The graphic wrap (not included) can be applied directly using hook & loop fastener. This with the addition of PVC graphic strengthening strips, creates a cleaner more professional finish. (Available where indicated).