

Linear Modular Graphic Display Kits

The Linear system consists of a unique range of aluminium frame profiles, components and accessories designed to offer the most cost-effective, **flexible display** solutions in the market.

Linear display kits are ideal for all types of promotion, exhibition or semi-permanent display. As the kits are modular, they can be added to and reconfigured for multiple-use. Together with a **choice of graphic fixing options**, Linear systems can be created to fit the design and graphic media of your choice.

Kits are made as **portable** as possible using specially designed rigid, wheeled cases that hold components safely in place during transportation.

We have created a range of **standard display kits** for you to choose from, to satisfy a range of display applications.



Looped Fabric Fixing
(Graphic Option A)



Rigid Substrate Infill
(Graphic Option B)



Mag Tape / Steel Tape
(Graphic Option C)

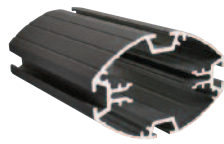


Spring Clip
(Graphic Option D)

NB - Fixings not included with kit for any of the graphic options shown



75mm (dia) Round Post
Option A



75mm (w) Oval Post
Option B



All kits use 5mm thick steel base (unless otherwise stated)



Powerspot 1000
Available in black and silver



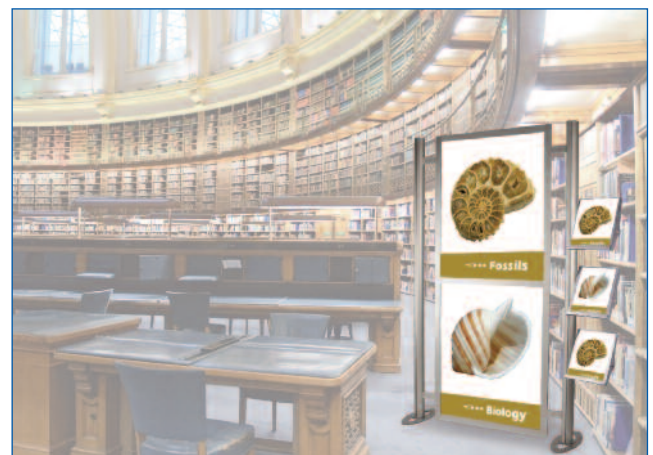
For showroom point of sale, demonstration and exhibition environments, the addition of leaflet holders makes Linear the ideal solution as a display and information centre. **Linear Kit 9** illustrated, is supplied with three literature holders as standard.



With four graphic sides **Linear Kit 8** can draw attention from any angle. This makes it ideal for promotional and retail units.



Add interest to retail displays with the use of translucent infills such as coloured acrylic; as illustrated with **Linear Kit 7**.



Linear kits are perfect for semi-permanent signage for reception and foyer areas and public spaces; as illustrated by **Linear Kit 4**.